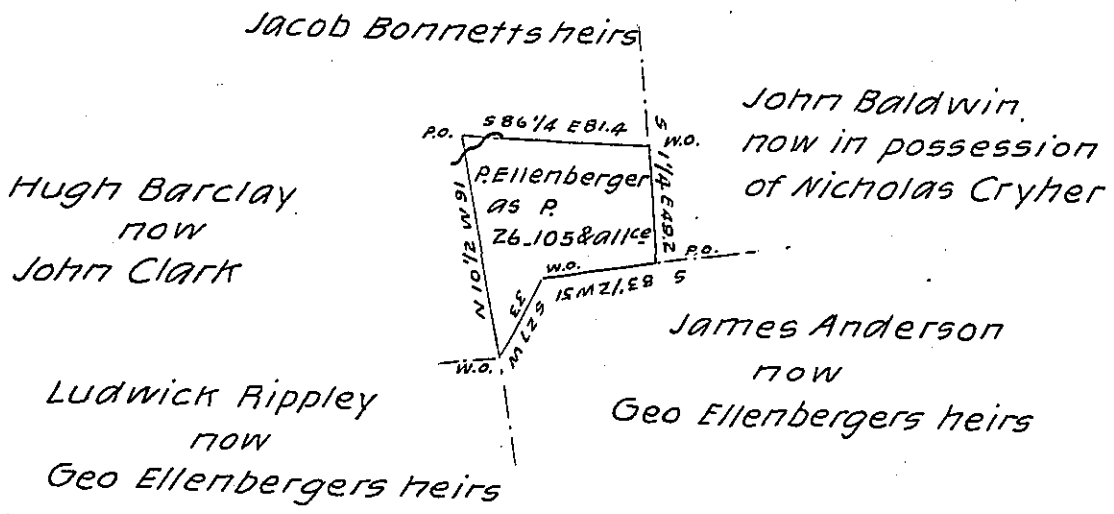


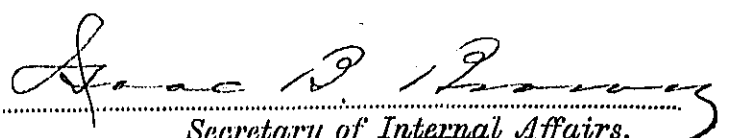
Bedford County



Situate - Napier Township Bedford County Containing 26
 acres 105 perches and allowance &c. Surveyed 29th day of March
 1847. by M. Reed Esq. late D.S. for Peter Ellenberger on Warrant
 dated the 7th Oct 1846. Examined & approved the 10th day of Sept
 1847.

Isaac Kemsinger D.S.

IN TESTIMONY that the above is a copy of the original remaining on file in
 the Department of Internal Affairs of Pennsylvania, made
 conformably to an Act of Assembly approved the 16th day of
 February, 1833, I have hereunto set my Hand and caused
 the Seal of said Department to be affixed at Harrisburg,
 this twenty-fourth day of August 1904


 Secretary of Internal Affairs.